

MCA Series

TETRACAM INC

The New MCA (Multi Channel Camera)



MCA 4

Available in versions of up to 6 channels
The newly re-engineered MCA is ready for any assignment
with unprecedented image quality, flexibility and control

High Quality Multi-Spectral Imaging

MCA

1.3 Megapixel(Per Channel) Image size for excellent ground resolution.

Video out and standard GPS data capture from an external receiver.

User interchangeable optics and filters

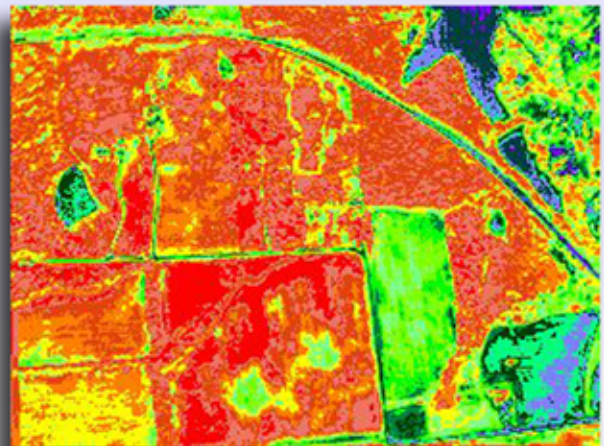
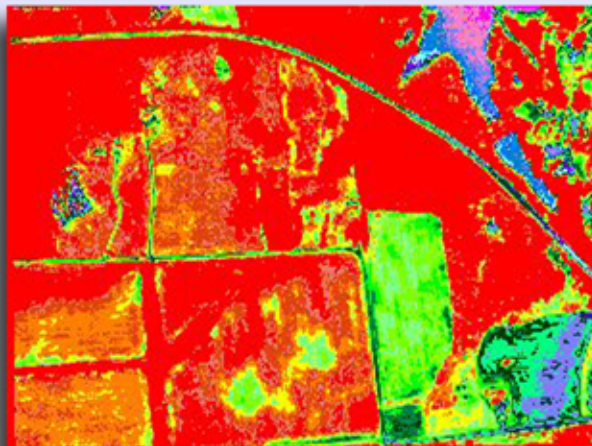
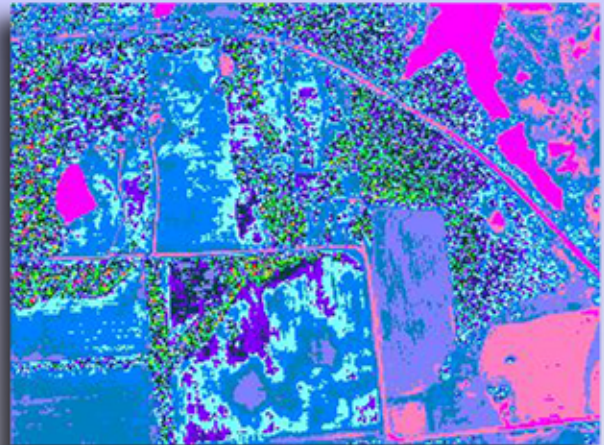
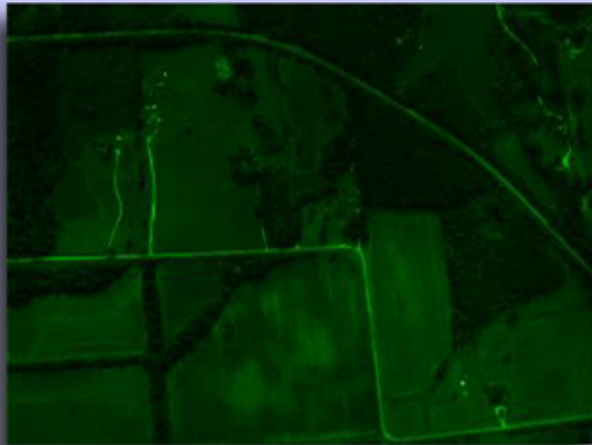
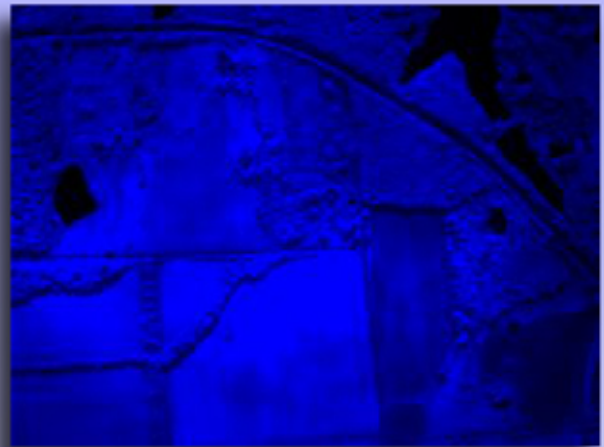
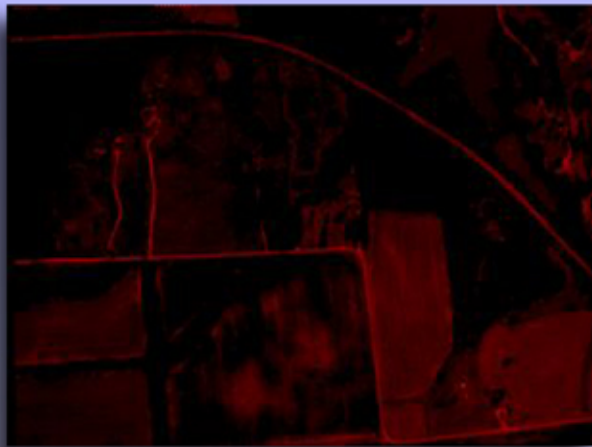
SensorLink GPS waypoint triggering application enabling camera triggering at pre-defined waypoints.

Uses standard Compact Flash Memory cards

Powerful PixelWrench2 image editing software with several tools specific to multi-spectral images and MCA cameras.



The MCA is ideal for critical narrow band digital photography on the ground or in the air.



Multi-spectral images captured with various filters.

MCA

Specifications

SXGA (1280 x 1024) 1.3 megapixel CMOS sensor, 1 per channel.
25mm standard spectrometer filter, behind lens, 1 per channel
Image storage to Compact Flash in Tetracam DCM, 8bit and 10bit formats.
C-mount system compatible with thousands of available lenses.
(supplied with 8.5 mm lenses)
USB interface
Multipin I/O connector for use with Tetracam Video ViewController accessory.
Steel Enclosure

Image Capture

Capacity: Approx. 1MB per image, limited only by CF card size.
Rate: Single Shot – Capture to end of compression and write: 3-5 seconds.
Burst Mode – 1.3 frames per second until buffer full.

Inputs

12 VDC @ 1A
RS-232 dedicated to capture of NMEA GPS sentences.
External Trigger

Outputs

Realtime NTSC or PAL Video for both viewfinder and menu operations

Data Interface

USB 1.1

Dimensions (MCA4)

7 x 6 x 4 in. (179 x 153 x 101mm) without lenses
Weight 4 lb. (1.8 kg) (4 channel configuration)

Dimensions (MCA6)

8 x 7 x 4 in. (203 x 179 x 101mm) without lenses
Weight 6.25 lb. (2.85 kg) (6 channel configuration)

System Includes

MCA Camera, 1 filter and 8.5mm lens per channel
256mB CF card (1 per channel)
USB Cable
Remote Trigger unit
AC/DC power supply
DC power cable
Teflon Calibration tag
Tetracam PixelWrench2 Application Software (for Windows)
Rugged carrying case

Available for order Now.

Contact your Tetracam Reseller for additional information and pricing or contact Tetracam direct at info@tetracam.com.



21601 Devonshire St. Suite 310 Chatsworth Ca. USA 91311
Phone-818-718-2119 Fax-818-718-7103
www.tetracam.com